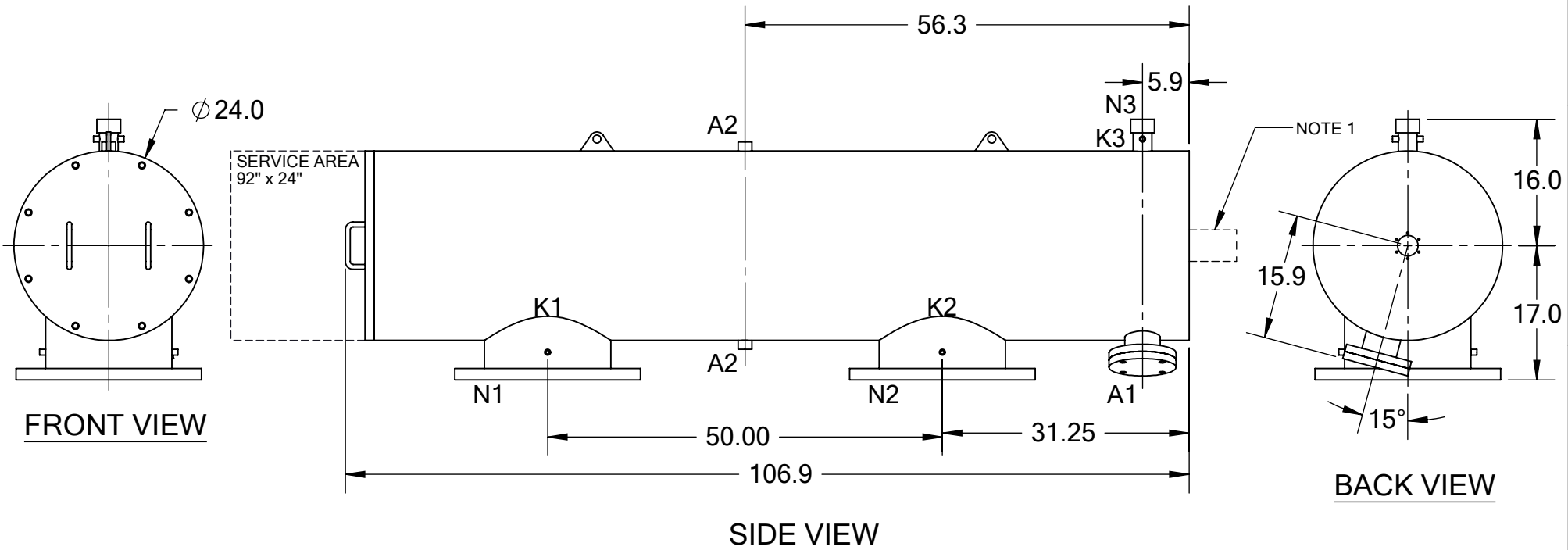


REVISIONS				
REV.	ZONE	DESCRIPTION	DATE	INITIAL
1	ALL	REMOVED FILTER EAR DIMENSIONS, CHANGED WORKING TEMP & PRESSURE TO DESIGN TEMP & PRESSURE	05/01/13	J.K.
2	7D	ADDED NOTE 1.	10/17/14	M.S.



TECHNICAL DATA

FLOW RATE	MAX. 6,000 GPM (1,363 m ³ /hr)
SCREEN SIZE	____ MICRON
SCREEN AREA	16.0 SQ. FEET
DESIGN TEMPERATURE	160 °F
DESIGN PRESSURE	150 PSI
EMPTY WEIGHT	~1,400 LBS.
FULL WEIGHT	~2,100 LBS.

NOTES:

- PLEASE ALLOW ~20" ADDITIONAL TO INSTALL AND REMOVE THE PISTON ASSEMBLY TO THE BACKSIDE OF THE FILTER.

NOZZLE	CONNECTION	TYPE	SIZE	RATING	TOLERANCES (UNLESS OTHERWISE SPECIFIED)	 2672 S. LA CIENEGA BLVD. LOS ANGELES, CA 90034 MAIN: (310) 839-2828 FAX: (310) 839-6878	
A1	SERVICE PORT	FLANGED	3.5" ASA	CL. #150 F.F. w/ Blind			FRAC. ±1/16 ANGLE ±1° .X ±.1 .XX ±.05 .XXX ±.010
A2	PRESSURE RELEASE	THREADED	1" NPT(2)	CLASS #150 F.F.S.O. CLASS #150 F.F.S.O.	MATERIAL: SST	TITLE: ABW16-LP FILTER, CUT DRAWING	
K1	HIGH PRESSURE CONN.	THREADED	1/4" NPT(2)		DATE: 08/18/11	DRAWING NUMBER	REV
K2	LOW PRESSURE CONN.	THREADED	1/4" NPT(2)	SCALE: 1:19	SHEET: 1 OF 1	ABW-16LP-CUT-01	2
K3	HYDRAULIC CONN.	THREADED	1/4" NPT(2)				
N1	INLET	FLANGED	16" ASA				
N2	OUTLET	FLANGED	16" ASA				
N3	FLUSH OUTLET	THREADED	2" NPT				