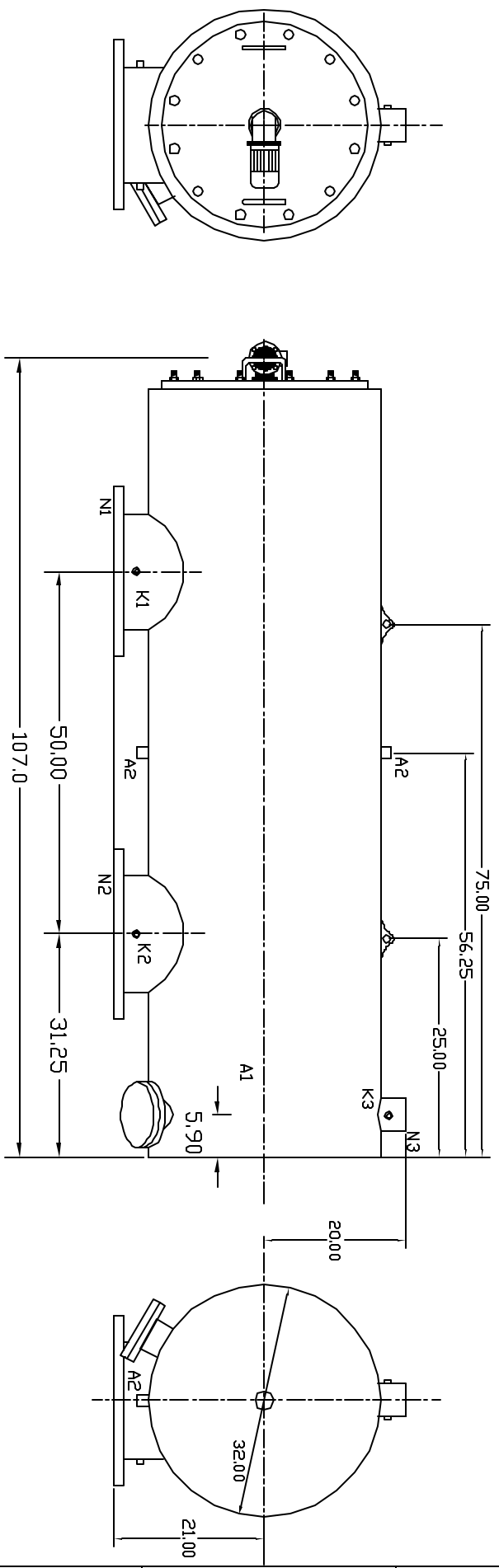


REVOLUTIONS		DESCRIPTION	DATE	APPROVED
ZONE	REV			



**TECHNICAL DATA**

Flow Rate	Max:10,000 GPM
Screen Size	_____ Micron
Screen Area	24.0 sq.ft.
Working Temp.	200 deg. F
Working Pressure	150 PSI
Empty Weight	1500 lbs.
Full Weight	_____ lbs.

NOZZLE	CONNECTION	TYPE OF CONNECTION	SIZE	RATING
A1	Service Port	Flanged	4"	150 lbs. F.F. w/Blind
A2	Pressure Release	Threaded	1"	ASA
K1	Hi. Press. Conn.	Threaded	1/4" NPT (2)	ASA (3)
K2	Low Press. Conn.	Threaded	1/4" NPT (2)	NPT (2)
K3	Flushoutlet Conn.	Threaded	1/4" NPT (2)	NPT (2)
N1	Inlet	Flanged	18"	ASA
N2	Outlet	Flanged	18"	ASA
N3	Flushoutlet	Threaded	2"	NPT

UNLESS OTHERWISE SPECIFIED  
 DIMENSIONS ARE IN INCHES  
 DECIMALS FRACTIONS ANGULAR  
 XX ± .05 ± 0.5 DEG  
 XXX ± .01

**AUTOMATIC FILTERS, INC.**  
 2672 S. LA CIENEGA BLVD.  
 LOS ANGELES, CA 90034  
 (310) 839-2828 FAX (310) 839-6878

DRAWN	Daniel Sternberg	DATE	L-1-06
CHECKED			
DESIGN			
TITLE		SIZE	DWG NO.
LPI18-SP		A	LPI18-SP-2
		NOT TO SCALE	SHEET OF
		REV	1