

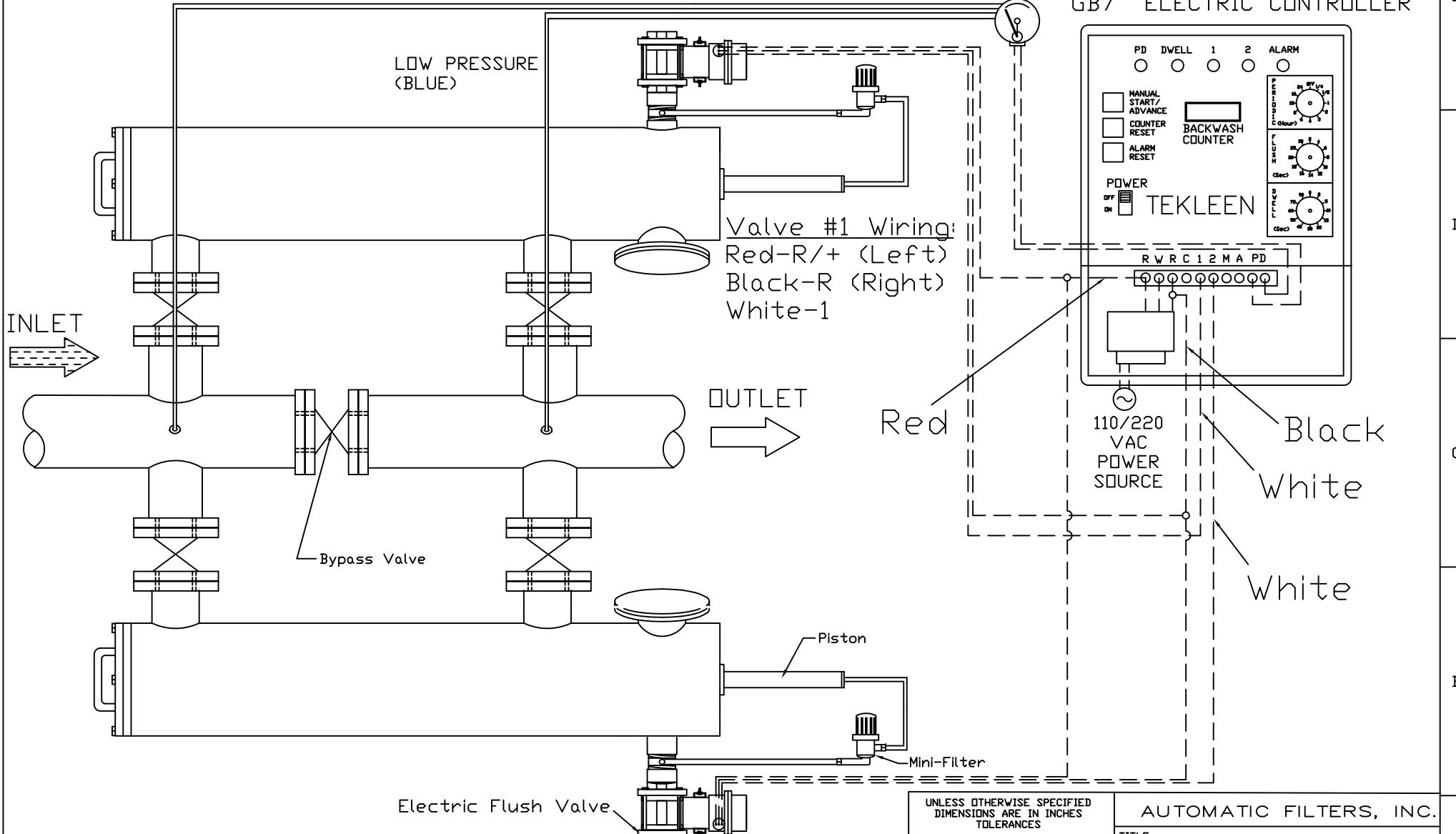
REVISIONS				
ZONE	REV	DESCRIPTION	DATE	APPROVED
7C	1	ADDED POWER SOURCE DESIGNATION. NO FUNCTIONAL CHANGE.	05/14/13	S.P.

HIGH PRESSURE (RED)

LOW PRESSURE (BLUE)

D/P Sensor

GB7 ELECTRIC CONTROLLER



Valve #1 Wiring:  
 Red-R/+ (Left)  
 Black-R (Right)  
 White-1

OUTLET

Bypass Valve

Piston

Mini-Filter

Electric Flush Valve

Valve #2 Wiring:  
 Red-R/+ (Left)  
 Black-R (Right)  
 White-2

Red

Black

White

White

110/220  
 VAC  
 POWER  
 SOURCE

----- Electrical Connection  
 ===== Hydraulic Connection

UNLESS OTHERWISE SPECIFIED DIMENSIONS ARE IN INCHES TOLERANCES		AUTOMATIC FILTERS, INC.		
		TITLE		
		Two ABW Filters in Parallel		
DRAWN	DATE	SIZE	DWG NO.	REV
Daniel Stenberg	9-26-05	A	WIRE-2ABWGB7-LAY-01	1
CHECKED		NOT TO SCALE		SHEET OF
DESIGN FOR:				