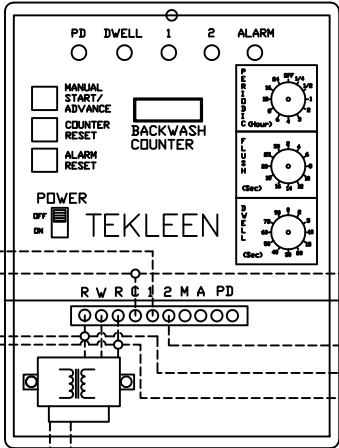
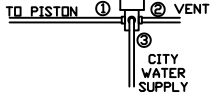
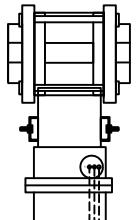


REVISIONS				
ZONE	REV	DESCRIPTION	DATE	APPROVED

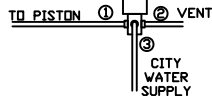
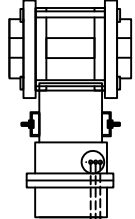
GB7 CONTROLLER



24 VAC ELECTRIC BALL VALVE #1



24 VAC ELECTRIC BALL VALVE #2



RED WIRE

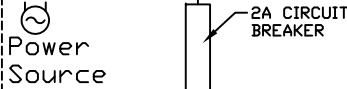
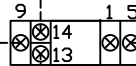
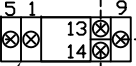
BLACK WIRE

RED WIRE

BLACK WIRE

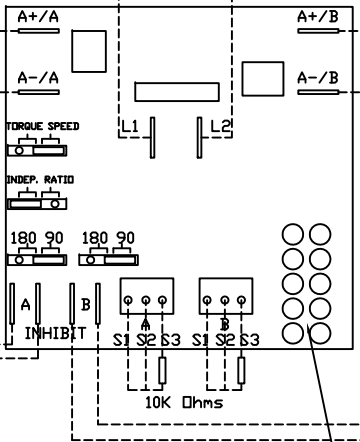
WHITE WIRE

WHITE WIRE



24 VAC Relay

MOTOR DRIVE

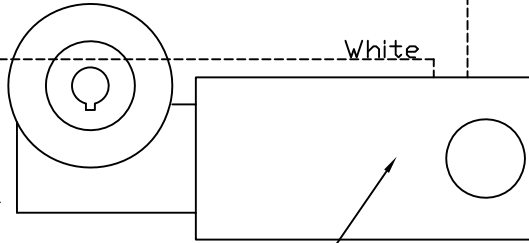
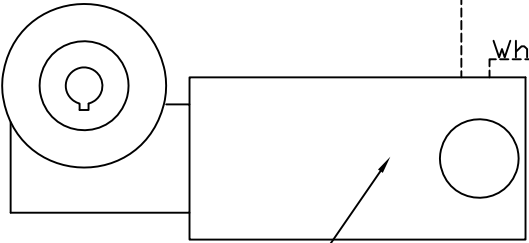


Black

White

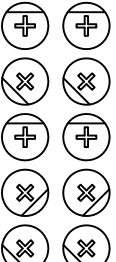
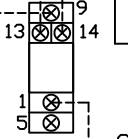
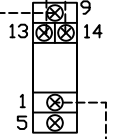
Black

White



90VDC Motor A

90VDC Motor B



A B

UNLESS OTHERWISE SPECIFIED DIMENSIONS ARE IN INCHES TOLERANCES

DECIMALS	ANGULAR
.XX ± .05	± 0.5 DEG.
.XXX ± .01	

DRAWN	DATE
E. HUI	03/14/14
CHECKED	
DESIGN	

AUTOMATIC FILTERS, INC.			
2672 S. LA CIENEGA BLVD.			
LOS ANGELES, CA 90034			
(310) 839-2828 FAX (310) 839-6878			
TITLE			
CONTROLLER WIRING FOR 2 LPFXX FILTERS WITH GB7, DRIVE BOARD, ELECTRIC FLUSH VALVES & SOLENOID VENTS			
DRAWN	DATE	TITLE	
E. HUI	03/14/14	CONTROLLER WIRING FOR 2 LPFXX FILTERS WITH GB7, DRIVE BOARD, ELECTRIC FLUSH VALVES & SOLENOID VENTS	
CHECKED		SIZE	REV
		A	N/A
DESIGN		WIRE-2LPFGB7-CON-SOL-01	
		NTS	SHEET 1 OF 1