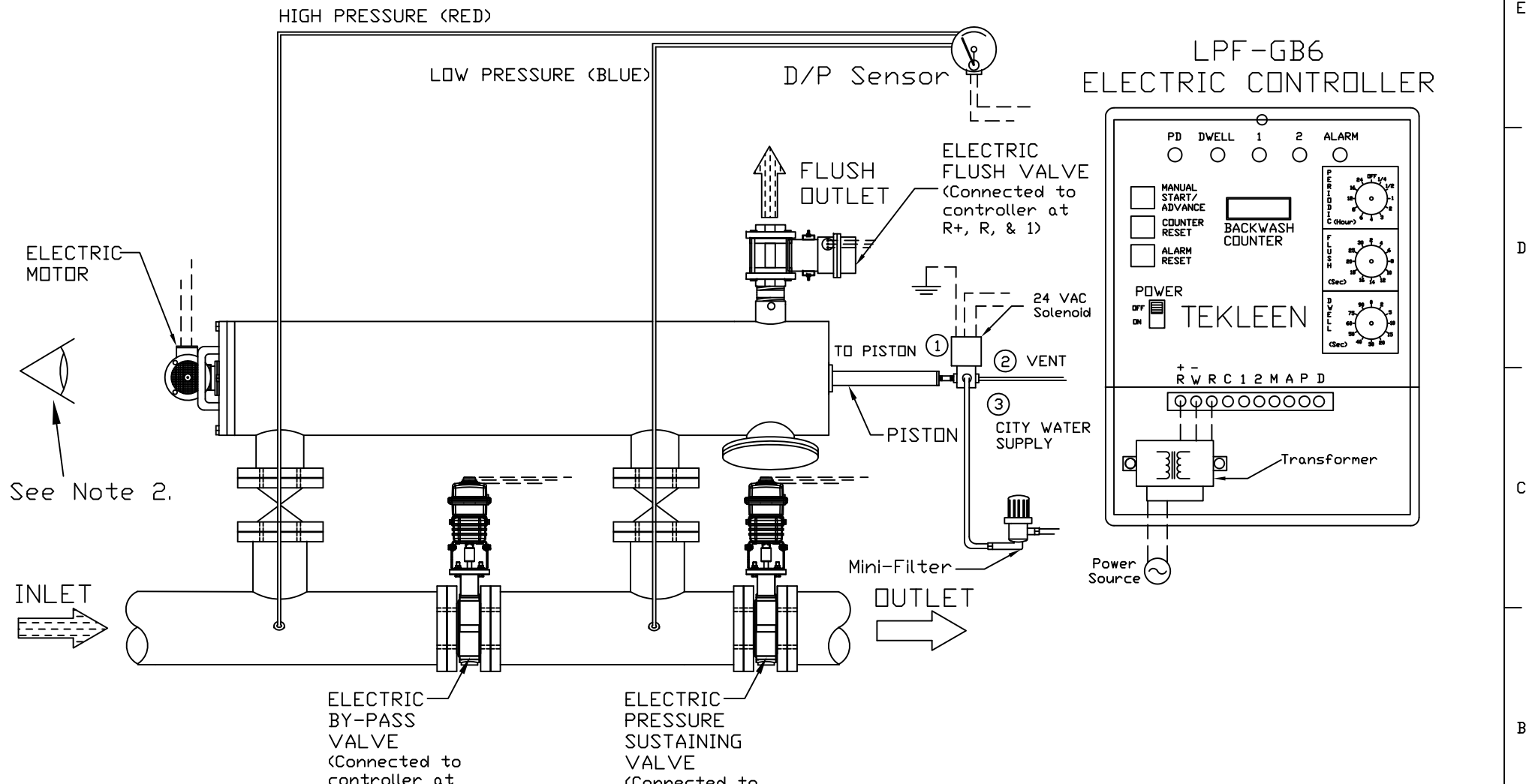


REVISIONS				
REV	ZONE	DESCRIPTION	DATE	APPROVED
1	6B	ADDED SOLENOID VALVE FOR PISTON VENT.	02/04/15	S.P.
2	ALL	MOUNTED SOLENOID DIRECTLY TO PISTON	01/26/18	R. LAM



- NOTES:**
1. Motor board, relays, circuit breaker, & transformer are located inside electric controller box.
 2. Motor must rotate counter clockwise from viewpoint for filters that contain a screen with area less than 5.0 sq. ft. (I.E. models LPF2-SP, 2-XLP, 3-LP, 3-SP, 4-LPE, 4-P & 6-P). Motor must rotate clockwise for all other filters.

Junction	○
No Junction)
Wire	----
Hydraulic Tube	=====

UNLESS OTHERWISE SPECIFIED DIMENSIONS ARE IN INCHES TOLERANCES		AUTOMATIC FILTERS, INC. 2672 S. LA CIENEGA BLVD. LOS ANGELES, CA 90034 (310) 839-2828 FAX (310) 839-6878	
DECIMALS .XX ± .05 .XXX ± .01	ANGULAR ± 0.5 DEG.	TITLE LAYOUT FOR LPF FILTER WITH GB6 CONTROLLER, ELECTRIC FLUSH VALVE, ELECTRIC BYPASS VALVE & ELECTRIC PRESSURE SUSTAINING VALVE	
DRAWN S. PERKINSON	DATE 07/11/12	SIZE A	DWG NO. WIRE-LPFGB6-EFV-PSV-EBV-LAY-01
CHECKED		REV 2	
DESIGN FOR:		Not To Scale	SHEET 1 OF 1