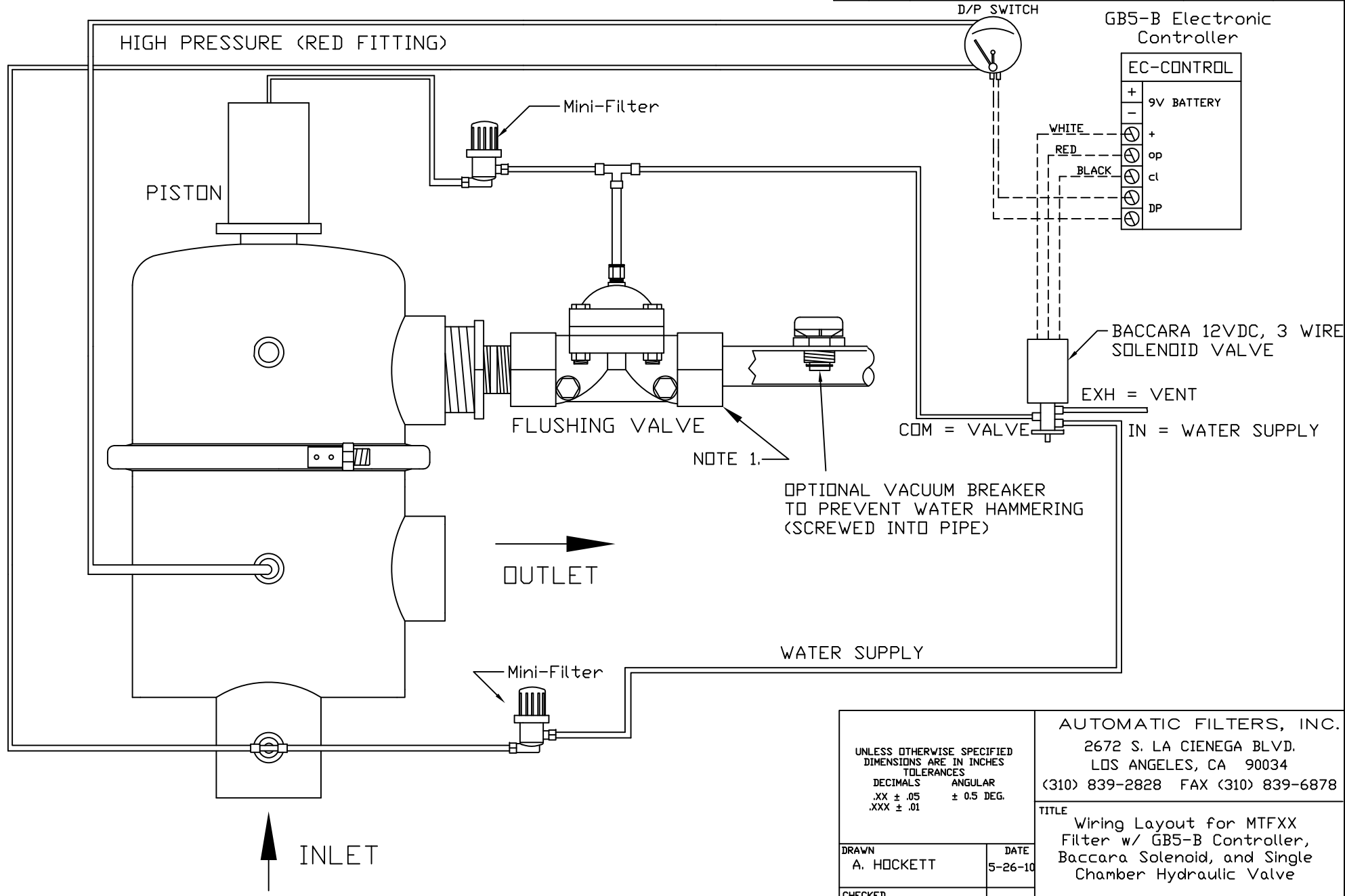


REVISIONS				
REV	ZONE	DESCRIPTION	DATE	APPROVED
1	1A	ADDED NOTE 1 REGARDING UNION.	09/24/13	S.P.

LOW PRESSURE (BLUE FITTING)

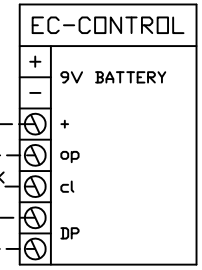
HIGH PRESSURE (RED FITTING)



NOTE 1.

OPTIONAL VACUUM BREAKER TO PREVENT WATER HAMMERING (SCREWED INTO PIPE)

GB5-B Electronic Controller



WHITE  
RED  
BLACK

BACCARA 12VDC, 3 WIRE SOLENOID VALVE

EXH = VENT

COM = VALVE

IN = WATER SUPPLY

UNLESS OTHERWISE SPECIFIED DIMENSIONS ARE IN INCHES TOLERANCES		AUTOMATIC FILTERS, INC.	
DECIMALS	ANGULAR	2672 S. LA CIENEGA BLVD.	
.XX ± .05	± 0.5 DEG.	LOS ANGELES, CA 90034	
.XXX ± .01		(310) 839-2828 FAX (310) 839-6878	
DRAWN A. HOCKETT		TITLE Wiring Layout for MTFXX Filter w/ GB5-B Controller, Baccara Solenoid, and Single Chamber Hydraulic Valve	
DATE 5-26-10		DWG NO. WIRE-MTFGB5B-LAY-01	
CHECKED		REV 1	
DESIGN		NOT SCALE	
		SHEET 1 OF 1	

NOTES:  
1. IT IS RECOMMENDED THAT A UNION BE INSTALLED BETWEEN THE FLUSH VALVE AND FLUSH LINE FOR EASE OF MAINTENANCE.