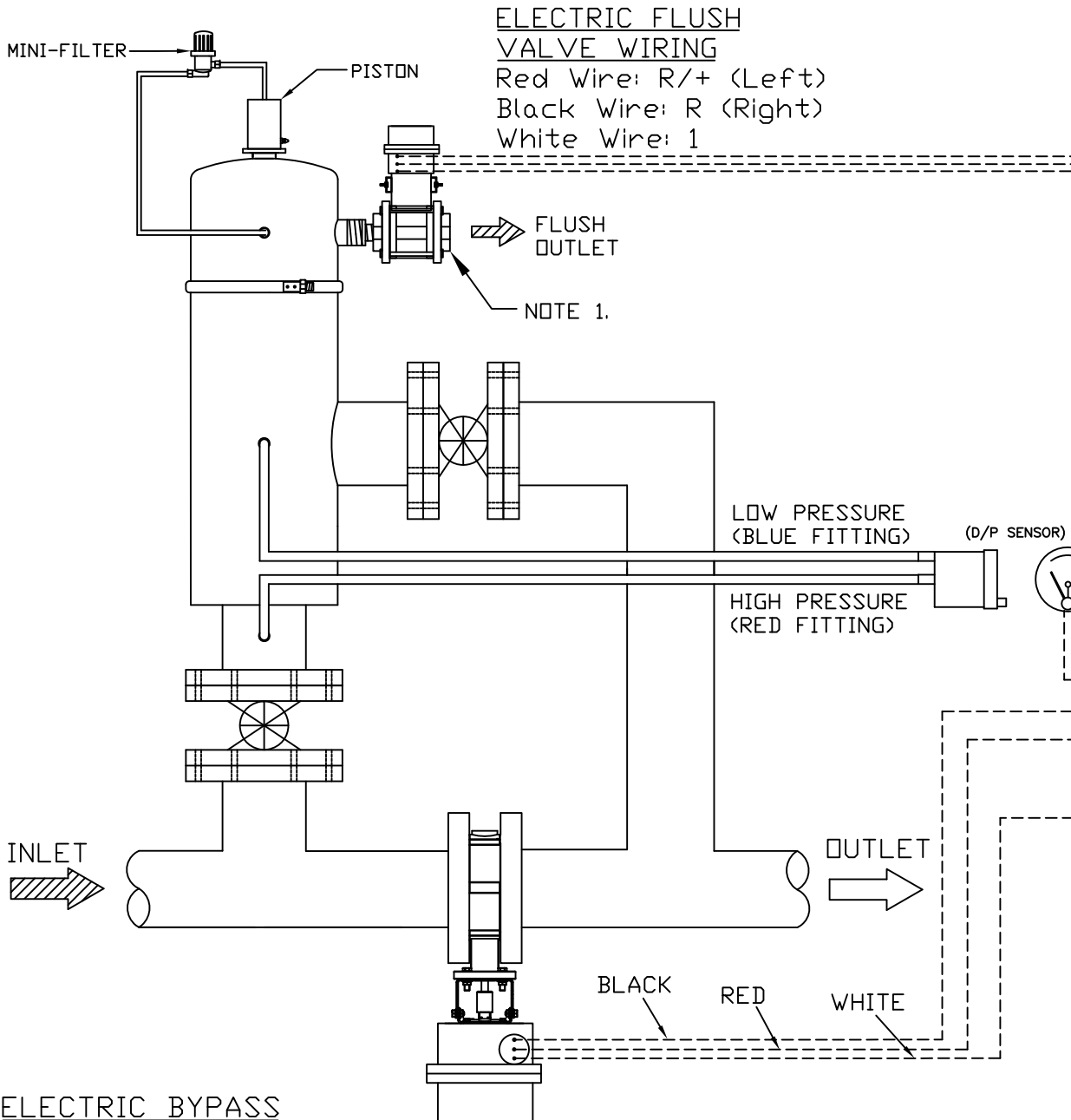


NOTES:
 1. IT IS RECOMMENDED THAT A UNION BE INSTALLED BETWEEN THE FLUSH VALVE AND FLUSH LINE FOR EASE OF MAINTENANCE.

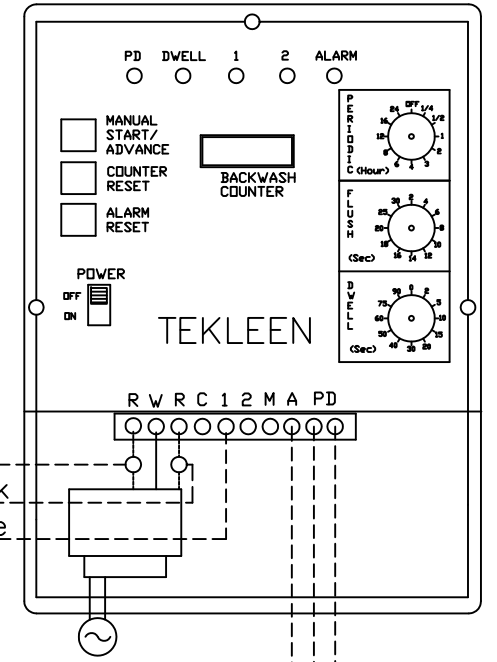
REVISIONS				
REV	ZONE	DESCRIPTION	DATE	APPROVED
1	1E	ADDED NOTE 1 REGARDING UNION.	06/27/13	S.P.
2	5B	REMOVED RELAY AND CHANGED VALVE WIRING	09/10/13	JK.



ELECTRIC FLUSH VALVE WIRING
 Red Wire: R/+ (Left)
 Black Wire: R (Right)
 White Wire: 1

ELECTRIC BYPASS VALVE WIRING
 Red Wire: R/+ (Left)
 Black Wire: R (Right)
 White Wire: A (Alarm)

GB6 ELECTRIC CONTROLLER



UNLESS OTHERWISE SPECIFIED DIMENSIONS ARE IN INCHES TOLERANCES	
DECIMALS .XX ± .05 .XXX ± .01	ANGULAR ± 0.5 DEG.
DRAWN S. PERKINSON	DATE 09/14/12
CHECKED	
DESIGN FOR:	

AUTOMATIC FILTERS, INC. 2672 S. LA CIENEGA BLVD. LOS ANGELES, CA 90034 (310) 839-2828 FAX (310) 839-6878		
TITLE MTF INSTALLATION LAYOUT WITH ELECTRIC FLUSH VALVE & ELECTRIC ALARM BYPASS VALVE		
SIZE A	DWG NO. WIRE-MTFGB6-EFV-EBV-LAY-01	REV 2
NOT TO SCALE		SHEET 1 OF 1

Junction	○
No Junction	○
Hydraulic Connection	====
Electrical Connection	----