

TEKLEEN®

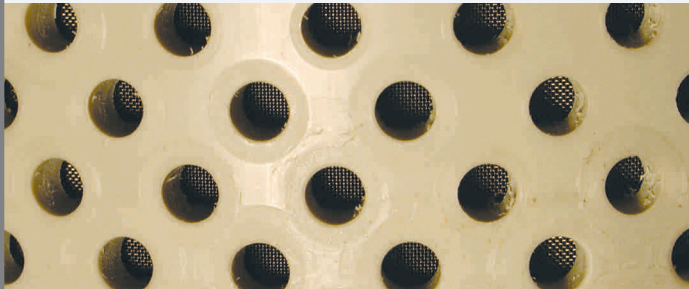
The Next Generation in Water Filtration

Screens

TEKLEEN® filters feature several types of top-quality screens.

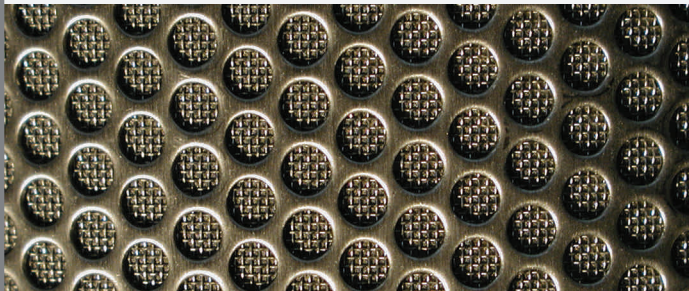
1) SST Mesh on Plastic Support

Woven mesh from SST, titanium, hastelloy, etc., 35 μ - 3,000 μ that is heat welded on plastic ribs (PVC, CPVC or Polypropylene). Practical & economical solution for a wide range of water filtration applications. Excellent pressure rating, very high bursting pressure and very good chemical resistance. Disadvantages are that the hole size may shift over time and that the plastic ribs that are used for mesh support are blinding about 40% of the effective screen area. Limited temperature ratings to 200°F. Comparable price \$ 1,500.



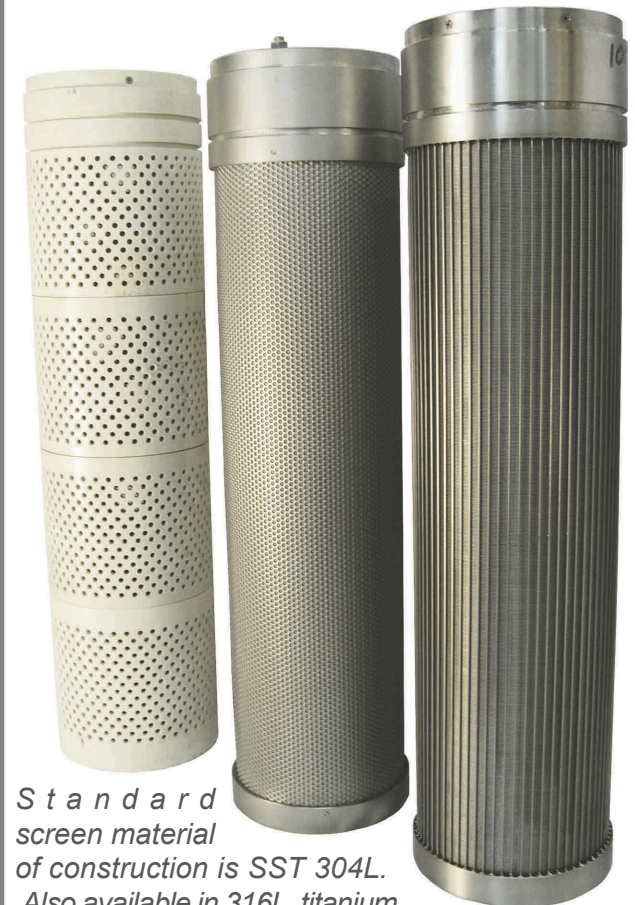
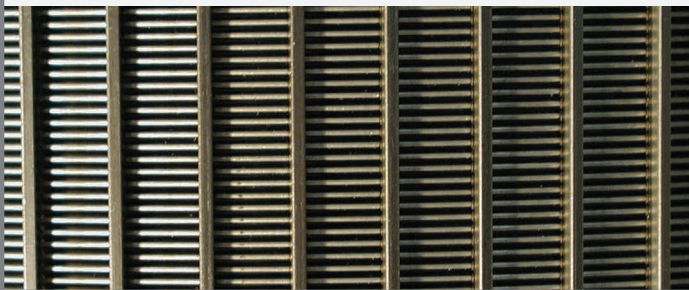
2) SST Mesh on Perforated Basket High performance screen

Woven mesh from SST, titanium, hastelloy, etc., 2 μ - 3,000 μ are diffusion bonded (sintered) on support mesh (drainage member) and on a perforated SST basket. The support mesh increases the screen open area by about 40%. The hole size will not change over time. Very high open screen area ratio, very good pressure rating, good bursting pressure rating and chemical resistance. Very high temperature ratings to 250°F. Comparable price \$ 3,000.



3) Vee Wire, Wedge Wire

Vee shape wires from SST, titanium, etc. 25 μ -3,000 μ that are spirally wound & welded on support rods. Rigid & very strong construction that will not flex or give to backwash force. Only two point particle contact. Very high consistency. Ideal for fibrous material. The slots will not shift or change over time. Good working pressure and bursting pressure. High temperature ratings to 300°F. Comparable price \$ 4,500.



Standard screen material of construction is SST 304L. Also available in 316L, titanium, hastelloy "C" and most fancy materials.

	Model	Connection inches	Screen Area sq. ft.	Max Flow gpm	Empty Wt. lbs.	Specifications
ABW	ABW2 - LP	2	0.5	100	120	Stainless steel body at the carbon steel price (stainless steel 316L body or carbon steel body with baked on powder epoxy coating at the same price.) Internal parts: stainless steel dirt collector, stainless steel screen on a PVC sleeve. Maximum 150 psi, 150° F. Standard screen mesh 50µ to 1000µ. Optional 3 layer stainless steel screen to 10µ, high temperature, and high pressure.
	ABW3	3	0.5	150	150	
	ABW3 - LP	3	1.7	250	200	
	ABW4	4	0.8	350	170	
	ABW4 - L	4	3.3	500	250	
	ABW4 - LP	4	3.3	500	250	
	ABW6 - L	6	3.3	800	350	
	ABW6 - LP	6	3.3	800	350	
	ABW6 - XLP	6	4.9	800	400	
	ABW8	8	3.3	1,300	400	
	ABW8 - P	8	3.3	1,300	400	
	ABW8 - LP	8	5.0	1,600	500	
	ABW10	10	4.4	1,800	500	
	ABW10 - P	10	4.4	1,800	500	
	ABW12	12	6.6	2,500	700	
	ABW12 - P	12	6.6	2,500	700	
	ABW14	14	7.4	4,000	800	
	ABW14 - P	14	7.4	4,000	800	
ABW16 - LP	16	10.0	6,000	1,000		
ABW20 - TP	20	20.0	8,000	1,800		
ABW24 - TP	24	20.0	12,000	2,000		
	Model	Connection inches	Screen Area sq. ft.	Max Flow gpm	Empty Wt. lbs.	Specifications
BELL	Bell - 1.5	1.5" NPT	0.5	50	60	Carbon steel body with baked on powdered epoxy coating. Maximum 150 psi, 150° F, Stainless steel screen mesh 35µ to 400µ. 2 gallons per rinse with a 1" valve & 8 gallons per rinse with a 2" valve.
	Bell - 2	2" NPT	0.5	100	60	
	Bell - 3	3" NPT	0.5	150	60	
	Bell - 3L	3" ANSI	0.8	200	80	
	Bell - 4	4" ANSI	0.8	300	90	
	Bell - 4L	4" ANSI	1.7	400	150	
	Bell - 6	6" ANSI	1.7	500	200	
	Model	Connection inches	Screen Area sq. ft.	Max Flow gpm	Empty Wt. lbs.	Specifications
MTF	MTF1	1" NPT	0.6	30	30	Stainless steel body, 316L. Maximum 150 psi, 200° F, 3 layers sintered stainless steel screen Mesh sizes from 5µ to 400µ. 5 second rinse duration, using 2 gallons per rinse without interrupting main flow. 1" flushing valve.
	MTF1.5	1.5" NPT	0.6	50	30	
	MTF2	2" NPT	0.6	80	30	
	MTF2 - L	2" NPT	1.5	150	60	
	MTF3	3" ASA	1.5	200	80	
	MTF4	4" ASA	1.5	300	90	
	Model	Connection inches	Screen Area sq. ft.	Max Flow gpm	Empty Wt. lbs.	Specifications
OBF	OBF - 2 - I	2"	0.8	125	50	All stainless steel body (304L or 316/L). Maximum 125 psi, 200°F, triple layered sintered stainless steel screen mesh 5µ to 800µ. 2 gallons per rinse without interruption to the main flow. NEW 1" flushing valve reverser backwash mechanism. 5 second rinse duration.
	OBF - 3P	3"	1.5	250	60	
	OBF - 4P	4"	3.0	500	80	